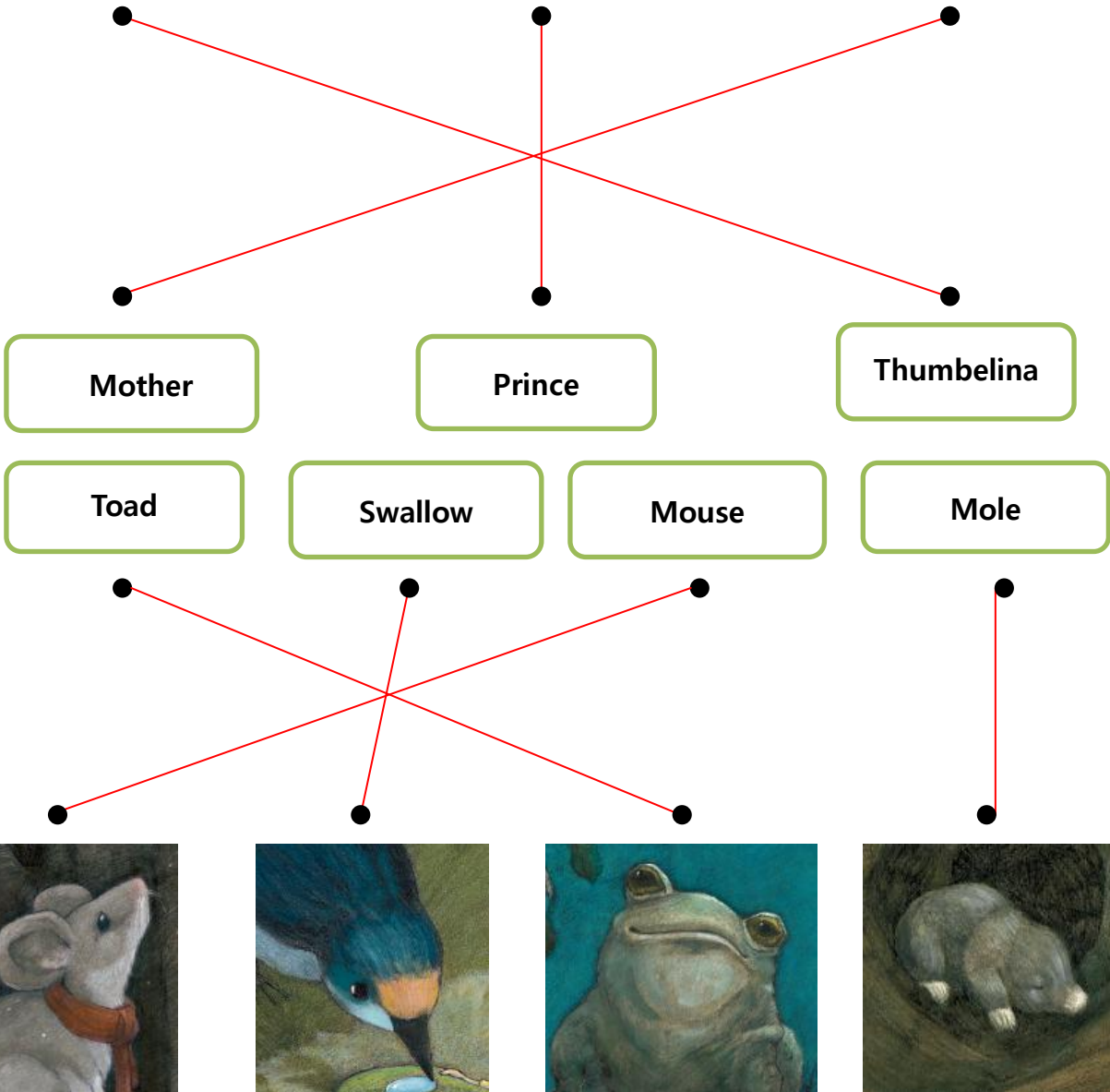


Characters

Thumbelina

Match the characters and their names.



Word Puzzle

Thumbelina

Complete the crossword puzzle.

flowerpot fairy walnut tunnel tulip petal

The crossword puzzle grid is filled with the following words:

- Across 1: petal
- Across 3: flowerpot
- Across 6: tunnel

The vertical words are:

- Down 2: tulip
- Down 4: fairy
- Down 5: walnut

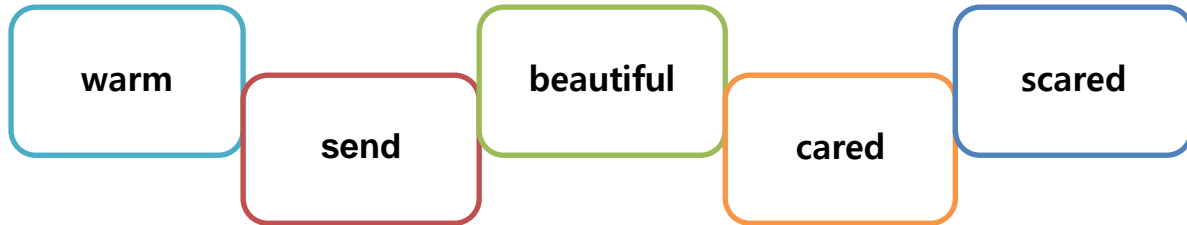
Illustrations and arrows:

- A red petal points to the first cell of the first row.
- A brown flowerpot points to the first cell of the third row.
- A yellow tulip points to the second cell of the second row.
- A brown walnut points to the fourth cell of the second row.
- A fairy points to the top cell of the fourth column.

Vocabulary

Thumbelina

Finish the sentences with the words given.

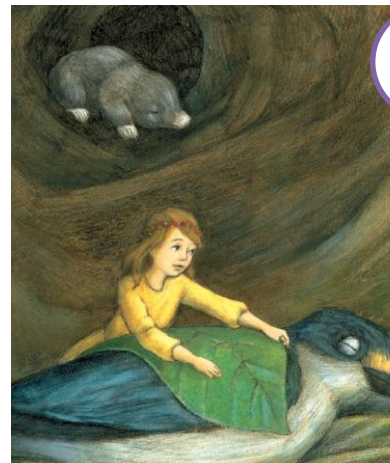


1. "How will I get home?" Thumbelina was very scared.
2. "I must be strong," she said. "I will send a letter as soon as I can."
3. Thumbelina cared for the bird all winter.
4. She wrapped herself in leaves but she could not get warm.
5. He gave her a beautiful red tulip.

Sequencing

Thumbelina

Number the pictures in story order.



Reading Comprehension

Thumbelina

1. Thumbelina was _____.

a. large

b. tiny

c. ugly

2. Who carried away the walnut shell with Thumbelina inside it?

a. Toad

b. Mouse

c. Mole

3. What did the swallow say?

a.

I am going
south.

b.

He has a very
big home.

c.

Don't
worry.

4. Choose T (True) or F (False).

a. Thumbelina lived happily in the forest without her mother.

T

F

b. Thumbelina sang songs and told stories for a blind mole.

T

F

c. Thumbelina gave the prince a beautiful red tulip.

T

F

5. Fill in the blank.

Problem	Solution
Thumbelina was taken away from her mother.	→ The <u>swallow</u> brought Thumbelina to a field where she met a prince. Thumbelina had found a new home.

Making My Book

Thumbelina

Draw pictures to make your own book.

0 0	<p>Thumbelina</p> <p>by _____</p>	<p>A woman wanted a child. She found Thumbelina in a flower.</p>
	<p>One night, a toad carried away the walnut shell with Thumbelina in it.</p>	<p>Thumbelina lived with a mouse and a mole under the ground.</p>
	<p>Thumbelina took care of a swallow and the swallow took Thumbelina to a field of colorful flowers.</p>	<p>Thumbelina met a prince and lived happily ever after.</p>